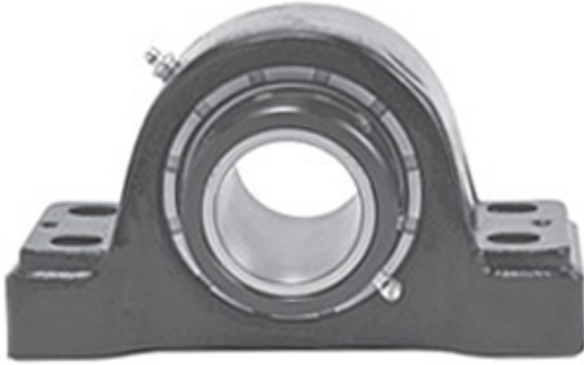




NTN BEARING CORP.OF AMERICA

2.438 Inch | 61.925 Millimeter x 3.5 Inch | 88.9 Millimeter x 2.75 Inch | 69.85 Millimeter LINK BELT PKB22439FE Pillow Block Bearings



Bearing No. PKB22439FE

PKB22439FE Bearing 2D drawings and 3D CAD models

Category	Pillow Block Bearings
Inventory	0.0
Manufacturer Name	REXNORD
Minimum Buy Quantity	N/A
Weight	9.08
EAN	0662327463038
Product Group	M06288
Number of Mounting Holes	4
Mounting Method	Concentric Collar
Housing Style	4 Bolt Pillow Block
Rolling Element	Spherical Roller Bearing
Housing Material	Cast Steel
Expansion / Non-expansion	Non-expansion
Mounting Bolts	1/2 Inch
Relubricatable	Yes
Insert Part Number	B22439EL
Seals	Spring Loaded Lip
Housing Configuration	1 Piece Solid
Inch - Metric	Inch
Other Features	Double Row Single Collar Extended Inner Race With Set Screw
Long Description	4 Bolt Pillow Block; 2-7/16" Bore; 2-3/4" Base to Center Height; Concentric Collar Mount; Spherical Roller



NTN BEARING CORP.OF AMERICA

	Bearing; Relubricatable; Cast Steel; Spring Loaded Lip; Non-expansion
Category	Pillow Block
UNSPSC	31171511
Harmonized Tariff Code	8483.20.40.80
Noun	Bearing
Keyword String	Pillow Block
Manufacturer URL	http://www.rexnord.com
Manufacturer Item Number	PKB22439FE
Manufacturer Internal Number	5846303
Weight / LBS	20
D	3.5 Inch 88.9 Millimeter
Actual Bolt Center to Center	7.1 Inch 181 Millimeter
Bolt Spacing Maximum	0 Inch 0 Millimeter
Nominal Bolt Center to Center	7.3 Inch 184 Millimeter
Bolt Spacing Minimum	0 Inch 0 Millimeter
B	2.75 Inch 69.85 Millimeter
d	2.438 Inch 61.925 Millimeter